

ARTICLE CODE

S601FA-80A

S601FA Series



Contact Type

Model Name: S601FA

Main Features:

- Compact design, 80A contact switch-over capability;
- Small contact resistance, high stability of electric contact;
- Strong anti-shock and anti-vibration capability;
- Low power consumption of coils, low temperature rise;
- Dimensions: (37.0×36.5×17.0) mm
- Shunt can be welded or copper conductor be connected

CONTACT Parameter

contact type	1A/1B
contact material	Silver Alloy
contact resistance	≤2mΩ
contact load	80A, 250VAC
Max. Transfer power	20000VA
moment striking current Max.	≥3000A
mechanical life	1×10 ⁶
electrical endurance	1×10 ⁴

CHARACTERISTICS

insulating resistance		1000MΩ (500VDC)
medium	between contact and coil	4000VAC 1min
	contact open	2000VAC 1min
close time		20msec, Max
off time		20msec, Max
impact	stability	100m/s ² (10g)
	intensity	1000m/s ² (100g)
vibration		10~55Hz 1.5mm
humidity		98%RH, 40°C
temperature		-25~+55°C
exit side		PCB
Weight		45g
packing		boot

COIL

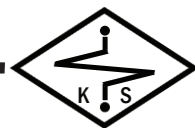
coil consumption	unicoil: 1.0W double coil: 2.0w
------------------	---------------------------------

COIL parameter

voltage rating (VDC)	actuating voltage (VDC)	Impulse width (ms)	Coil resistance (Ω)
unicoil			
6	4.5	50	36 Ω ±10%
9	6.3	50	75 Ω ±10%
12	8.4	50	145 Ω ±10%
24	16.8	50	576 Ω ±10%
Double coiled			
6	4.5	50	18 Ω ±10%
9	6.3	50	37.5 Ω ±10%
12	8.4	50	72.5 Ω ±10%
24	16.8	50	288 Ω ±10%

Typical Application of the Relay:

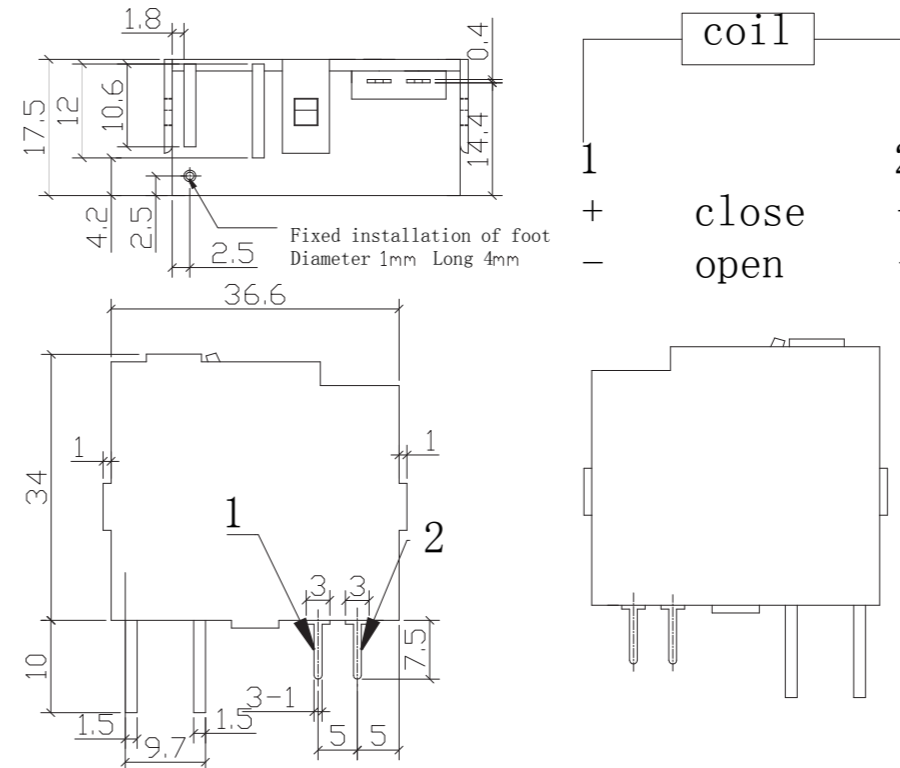
- 1: Mainly used for IC-card-prepayment based electric energy meters
- 2: It might also be used for combination switches of electric power factor compensation switch-capacitor, home appliances and automatic control devices.



Typical Uses

- Smart Meter
- Power Composite switch
- Intelligent Lighting Control
- Electric remote control
- Home Intelligent Control

Dimensions (mm) 、Wiring diagram



Dimensions (mm) 、Wiring diagram

